

# **Develop Better Assays for Every Human Protein**

## **OriGene overview**

**Application of transfected over-expression lysates**

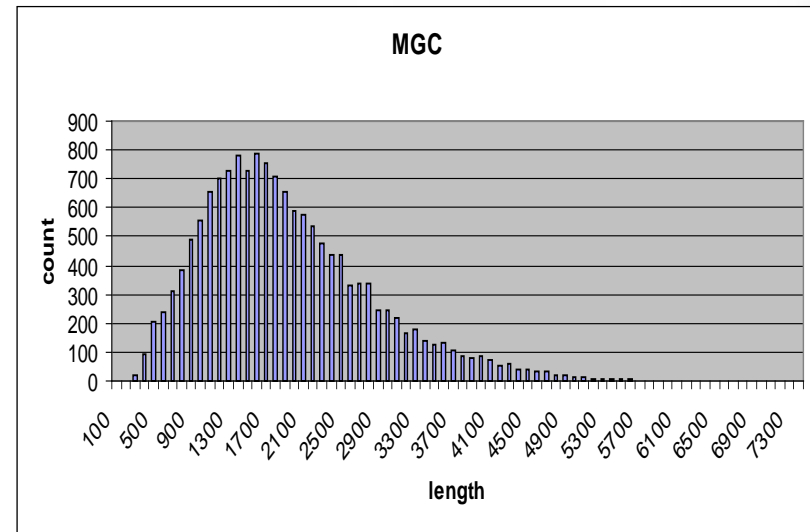
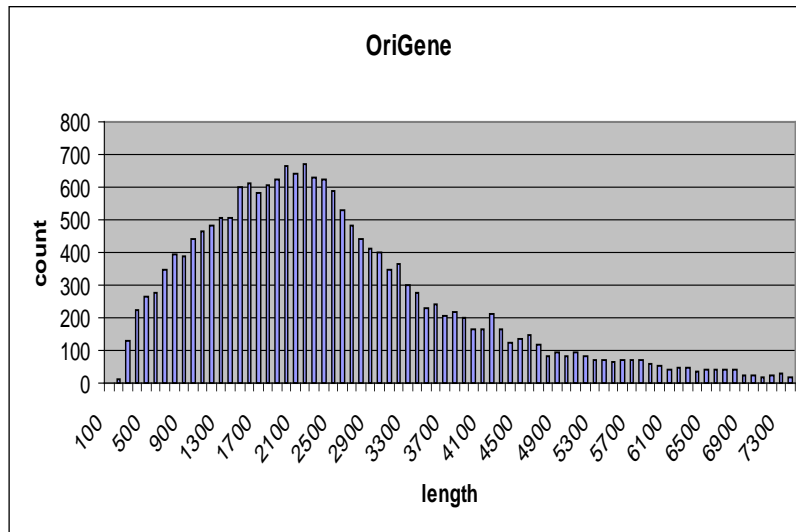
**Application of purified recombinant human proteins**

# About OriGene

- Started in 1996 with the goal to create largest commercial collection of full-length human cDNAs
- Develop technologies focusing on systems biology approaches to study gene function
- Provide comprehensive technology platforms for cancer biomarker discovery and validation

# Largest ORF Collections

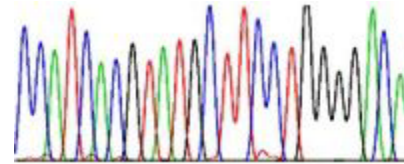
- 25,000 human and 12,000 mouse ORFs
- Including 5,000 tough genes that are only available from OriGene
- > 13,000 ready for immediate delivery



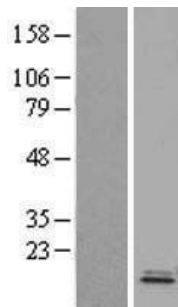
# Highest Quality Standard

Not just sequence-verification

But also



Expression Validation on 11,000 TrueORF clones

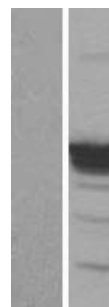


**APO3C**

TrueORF:RC206566

ORF size: 300 bp

Predicted MW: 11 kd

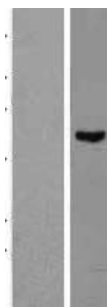


**TP53**

TrueORF:RC200003

ORF size: 1182 bp

Predicted MW: 53 kd



**ENC1**

TrueORF:RC201842

ORF size: 1770 bp

Predicted MW: 65 kd



**CDH3**

TrueORF:RC207346

ORF size: 2490 bp

Predicted MW: 91 kd



**LRP1**

TrueORF:RC218369

ORF size: 13635 bp

Predicted MW: 504 kd

# Application Ready

## Vectors

All ORF clones are in an expression ready vector with Myc-DDK tag or GFP tag

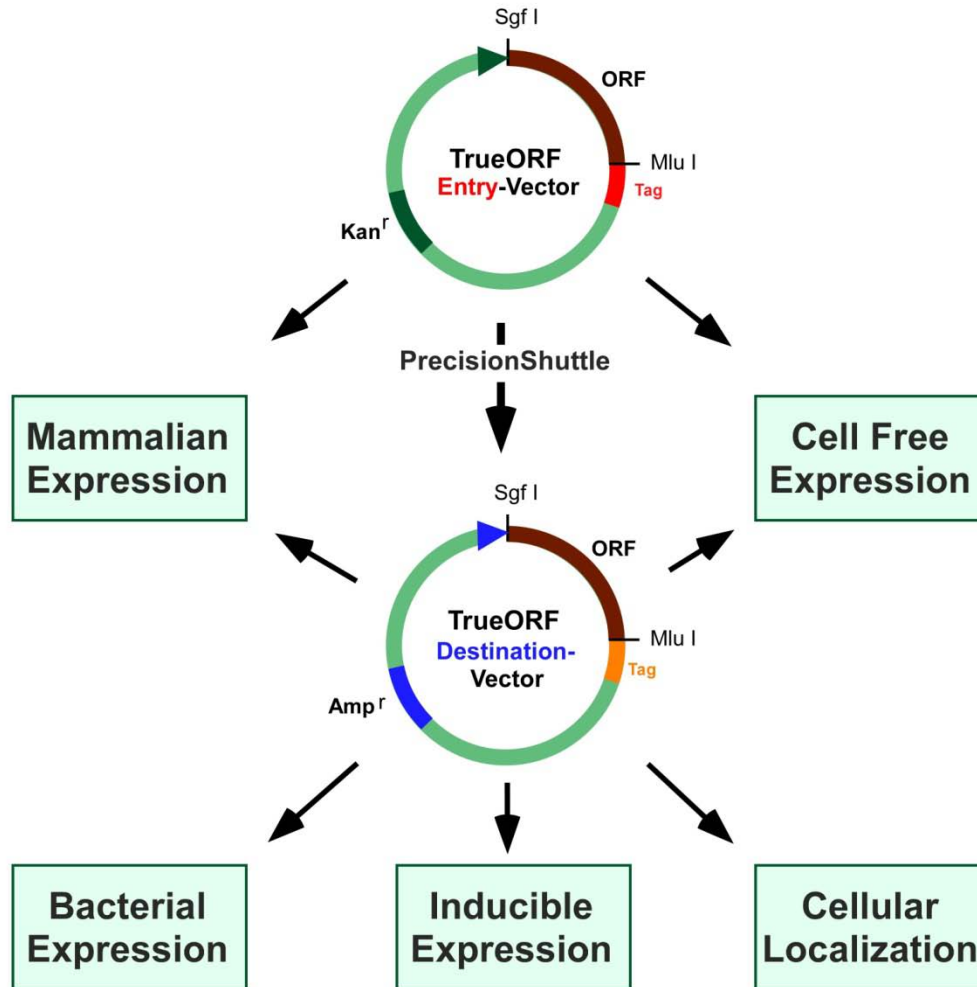
All gene inserts can be easily shuttled to any of > 60 destination vectors through simple “cut-and-paste” protocols (PrecisionShuttle)

## Minimal Post-purchase manipulation

10 ug transfection grade plasmid DNA is supplied for each ORF

Large quantity plasmid for follow-up screen can be re-ordered at affordable price

# PrecisionShuttle



# Complete Gene/clone Resource



TrueORF/Gold  
Human/mouse  
Expression vectors

5,000 human  
Custom purification

TrueMAB

TruePlex

**Clones/genes**

**Proteins**

**Antibodies**

**Assays**

Any species  
Any sequences  
Any variants

Optimized  
expression

Antibody engineering

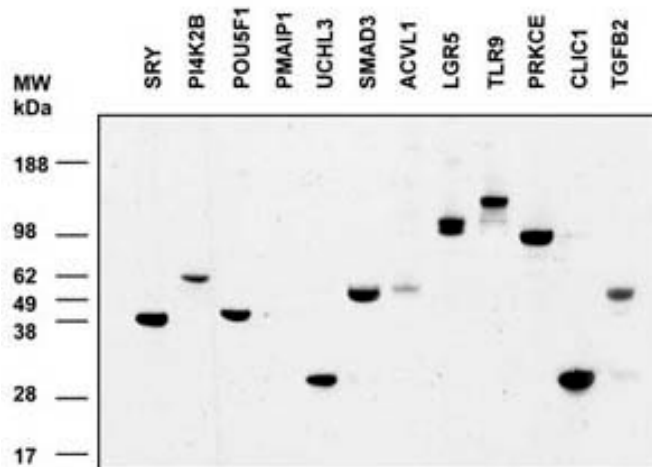


# Application of Over-expression Protein Lysates

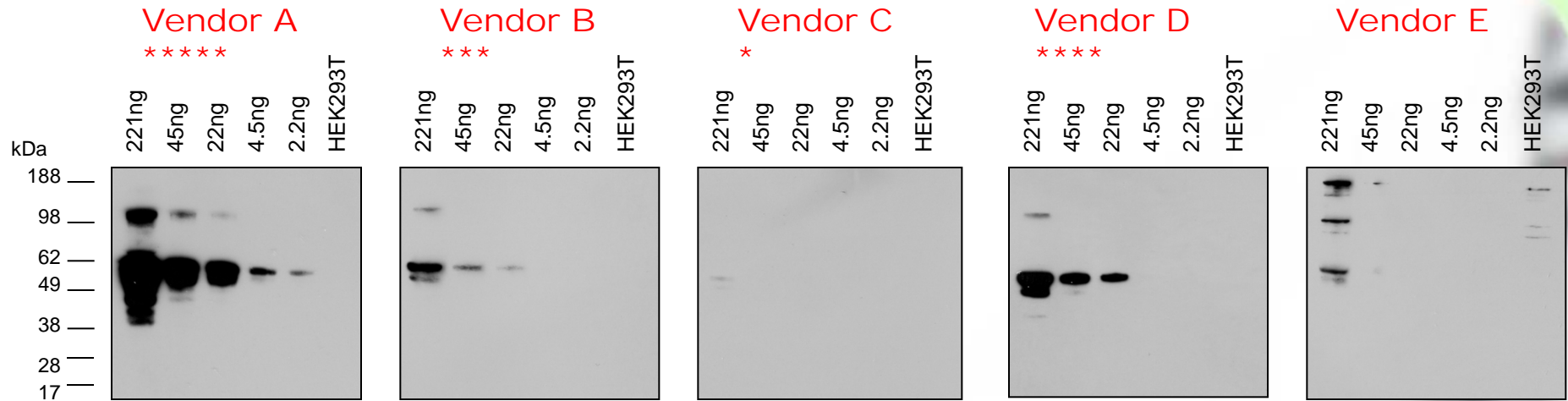


# Transfected Over-Expression Lysates

- 11,000 TrueORF clone transfected HEK293T cell lysates
- Mammalian cell expressed full length, WB validated
- Delivered in modified RIPA buffer to preserve protein function
- Ideal tools for antibody validation, protein function studies, and as assay standards



# Antibody Validation

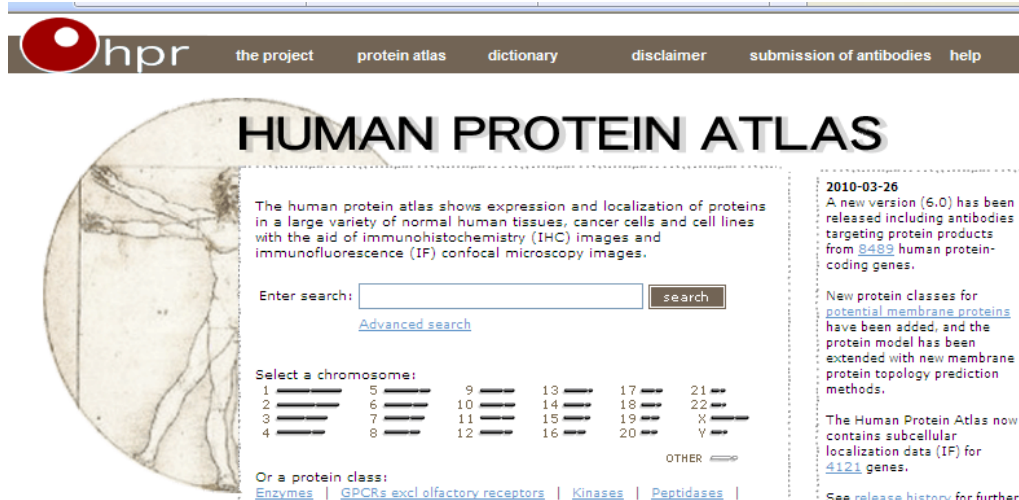


Five commercial antibodies against human p53 were evaluated in Western blot experiments with p53 over-expression lysate. (According to Ab vendors' suggested protocols)

The p53 protein level in a cell lysate was pre-determined using a purified GST-Myc-DDK standard. Lysate was serially diluted before immunoblotting.

The antibody quality and star rating is based on specific p53 protein detection level.

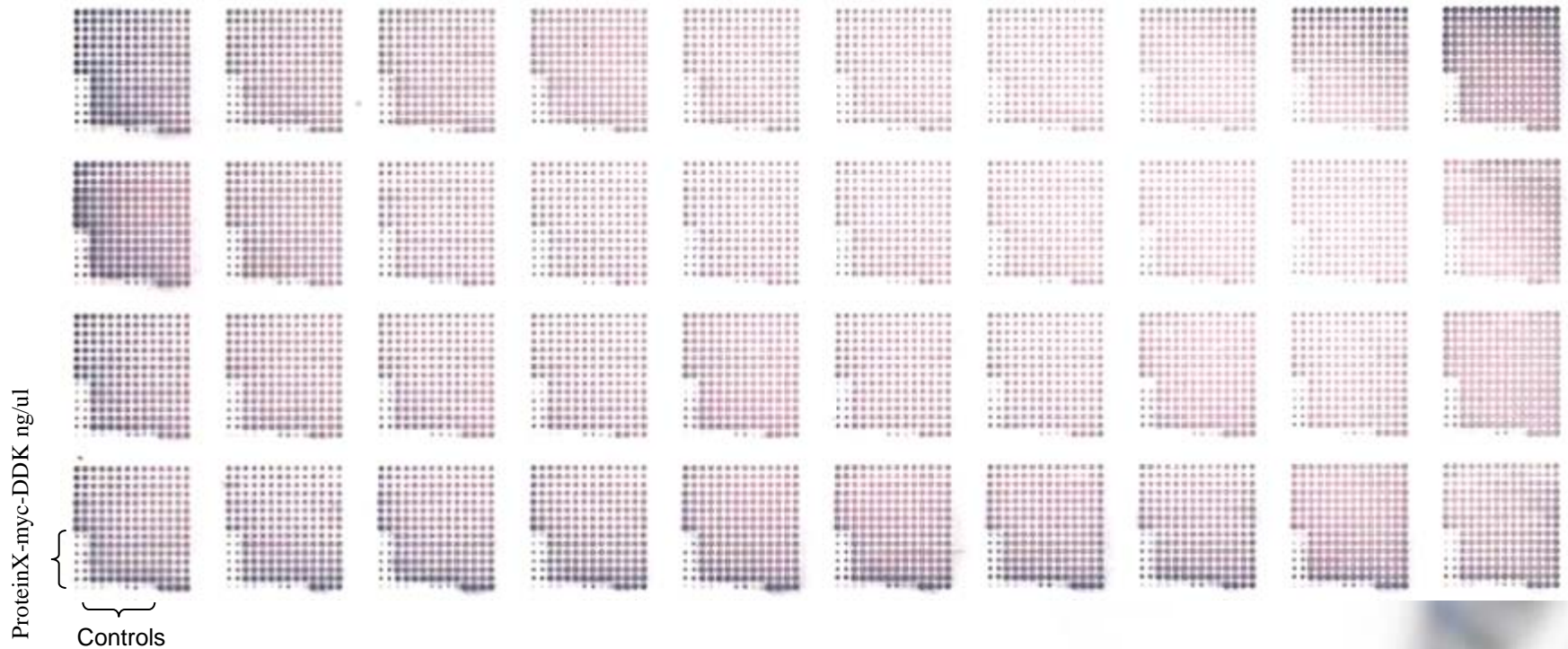
# Over-expression Lysates



The screenshot shows the Human Protein Atlas (HPR) website. At the top, there is a navigation bar with the 'hpr' logo and links for 'the project', 'protein atlas', 'dictionary', 'disclaimer', 'submission of antibodies', and 'help'. Below the navigation bar, the main heading reads 'HUMAN PROTEIN ATLAS'. To the left of the main content is a circular image of a human figure with protein localization data overlaid. The main content area contains a search bar with the text 'Enter search:' and a 'search' button. Below the search bar is a link for 'Advanced search'. Underneath is a section for 'Select a chromosome:' with a grid of chromosome icons (1-22, X, Y) and an 'OTHER' option. Below that is a section for 'Or a protein class:' with links for 'Enzymes', 'GPCRs excl olfactory receptors', 'Kinases', and 'Peptidases'. On the right side, there is a news section dated '2010-03-26' with text about a new version (5.0) and protein classes. At the bottom right, there is a link for 'See release history for further'.

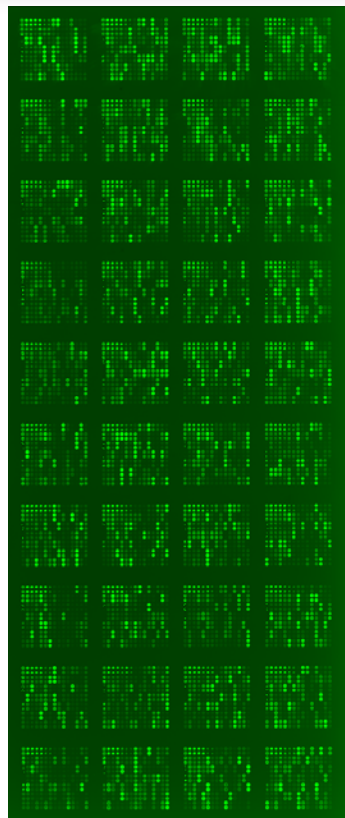
OriGene over-expression lysates adopted in Antibody Atlas Program to validate polyclonal antibodies. Success rate is improved from 40% with regular cell lysates to 80% with over-expression lysates. Data from Prof Mathias Uhlén, Program Director.

# 10,000 Lysate Protein Arrays

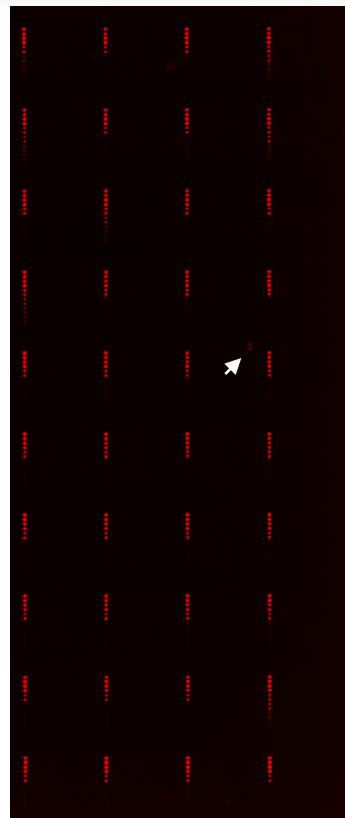


More than 20,000 features (10,000 unique overexpression lysates) and purified control proteins were spotted on this single nitrocellulose slide. To examine the morphology for each feature, the slide was stained with colloidal gold for total protein.

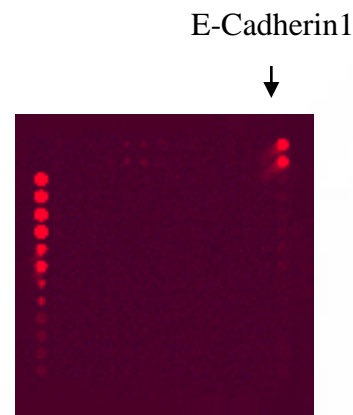
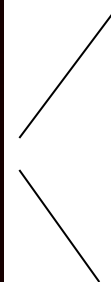
# 10,000 Lysate Protein Arrays



Anti-DDK (Rabbit)



Anti-E-Cadherin1 (mAb)



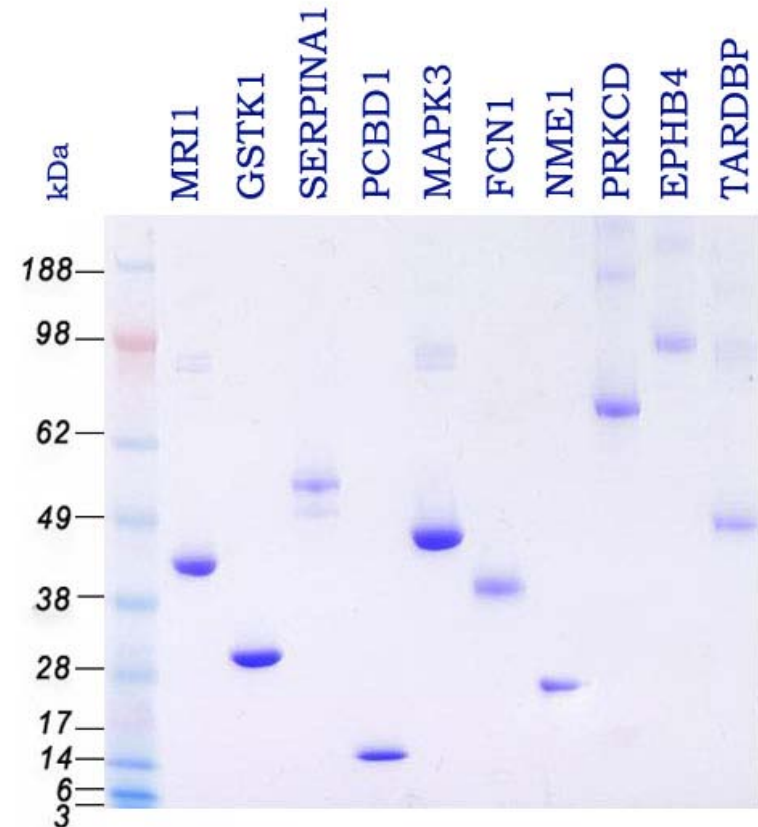
Enlarged image

Using OriGene antigen microarray chip technology  
to decode antibodies that were generated by whole cell immunization

# Application of Purified Proteins

# Full Length Human Proteins

- Produced from TrueORF cDNA clones
- 5,000 full length human proteins
- Expressed in HEK293 cells
- Optimal preservation of protein structure, post-translational modifications and functions

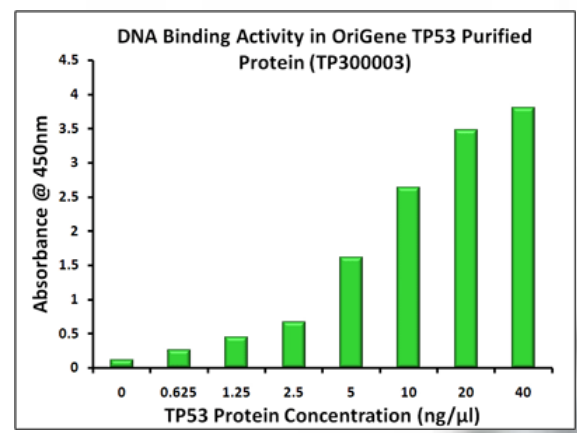
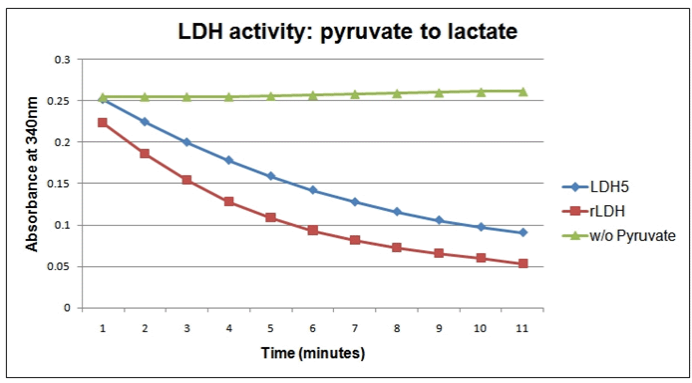
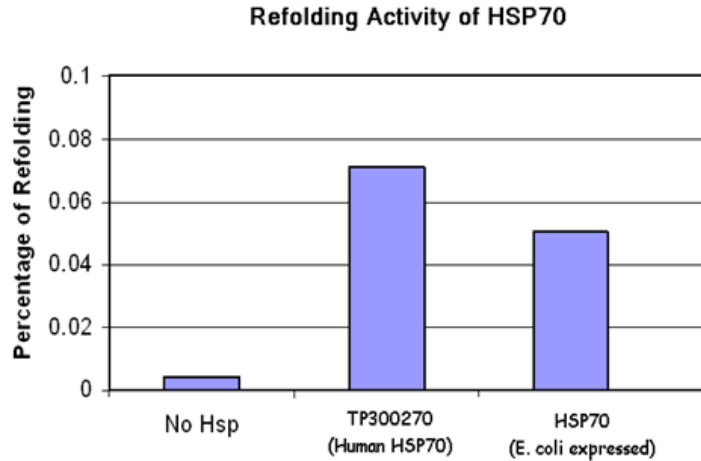
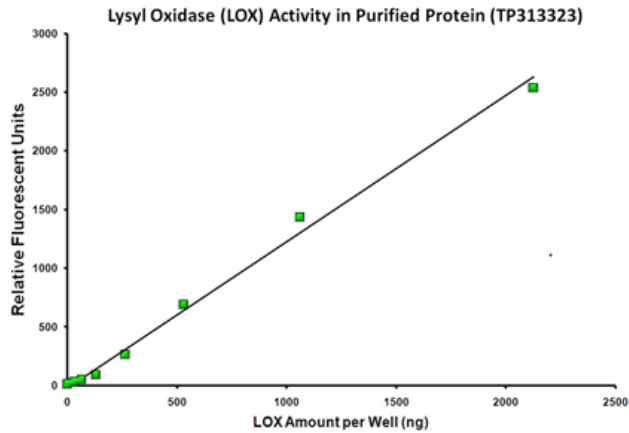


# Benefits of Mammalian Expression

	Mammalian	Yeast	Insect cells	E. coli
Protein folding and purification	Optimal	Poor	Low	Poor
Post-translational processing	Yes	Low	Low	No
Authenticity & Bioactivity	Native and active	Poor	Poor	Very poor



# Protein Functional Data



# MS Collaboration with ISB

- Generate signature peptide sequences for all 5,000 human proteins
  - Sequences will be in PeptideAtlas database
- Heavy-isotope labeled purified proteins
  - 5,000 available now for SRM/MRM application
- Isotope labeled peptides
  - Coming in 2011 for all 5,000 human protein



# Rapid Assay Development

- **c-Myc**

FELLTPPLSPSR, LASYQAAR, DSGSPNPAR,  
SESGPSAGGHSKPPHSPLVLK, DYPAAK, QISNNR, SSDTEENVK,  
THNVLER, SFFALR, DQIPELENNEK, ATAYILSVQAEEQK,  
LISEEDLLR

- **Notch 1**

QGVDVAR, ASLLPGGSEGGR, GSIVYLEIDNR, QHGQLWFPEGFK,  
EPLGEDSVGLKPLK, DIAQER, LLDEYNLVR, LAFETGPPR

- **Bcl-XL**

EAGDEFLR, ELVVDFLSYK, GYSWSQFSDVEENR

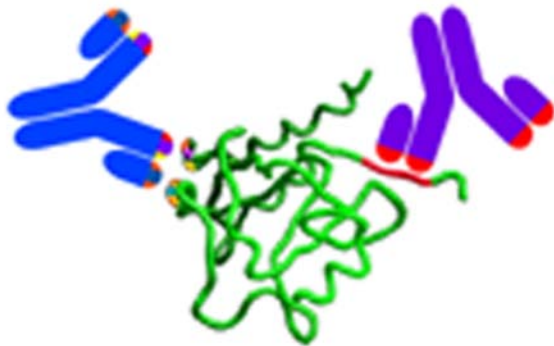
- **Mcl-1**

QSLEIISR, LLFAPTR

- **NF $\kappa$ B1**

VLSILLK, QFAIVFK, NTVNLFGK, QQIDELR, VFETLEAR, AGADLSLLDR,  
VIVQLVTNGK, LGNSVLHLAAK, LGLGILNNAFR, QEDVVEDLLR,  
LEPVVSDAIYDSK, EESAGQVDNLFLEK, HANALFDYAVTGDVK,  
TTSQAHSPLSPASTR, NDLYQTPLHLAVITK

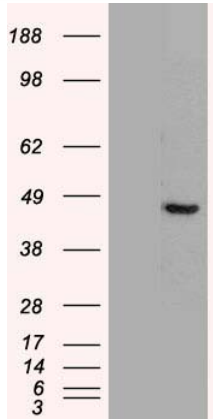
# mAb for Every Human Protein



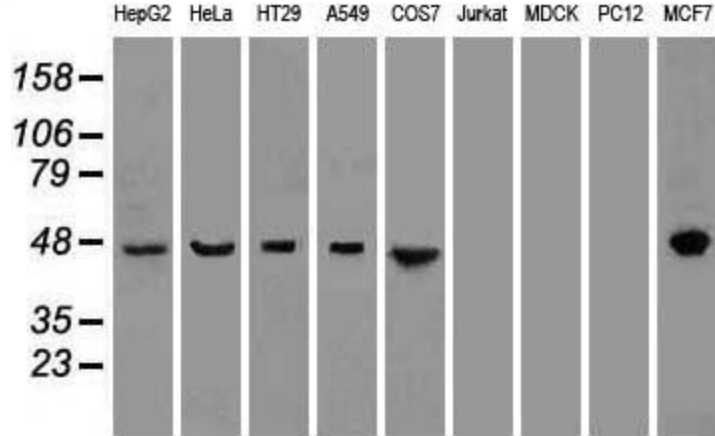
- **Dedicated mAb center**
  - Capacity: 200 immunizations per month
- **Authentic proteins as antigens**
  - Full length proteins made in human cells
- **Extensive validation**
  - WB: 9 different cell lines
  - IHC: 24 different tissues
  - IF
  - Flow
  - Luminex

**Goal: produce high quality mAb to every human proteins in 5-10 years**

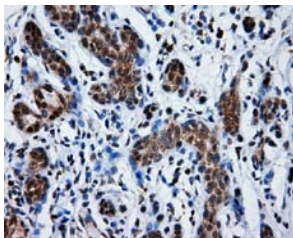
# HTP Validation of mAbs



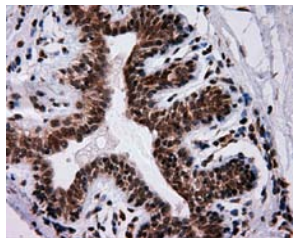
Anti-KRT WB with OriGene over expression lysate



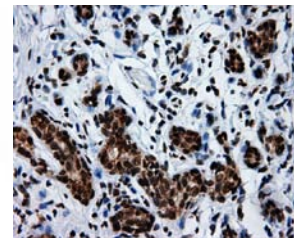
Anti-KRT WB with cell panel of 9 different cell lines (For endogenous protein detection in cell line)



ERCC1 (8F1)



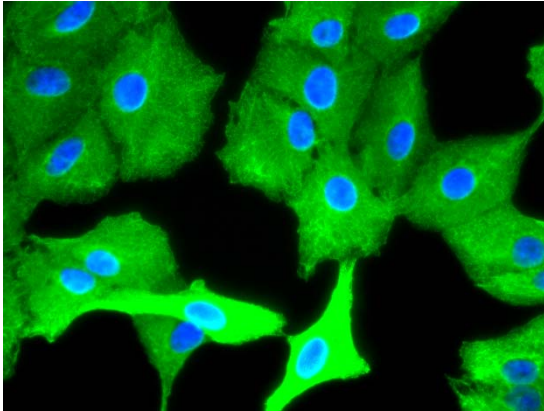
ERCC1 (1A3)



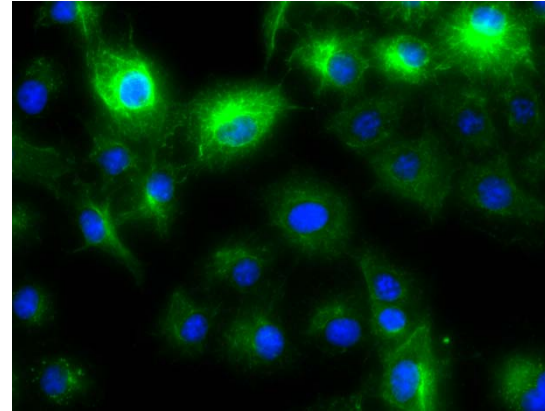
ERCC1 (4F9)

IHC data for human carcinoma liver tissue (12 IHC data from normal human tissue, and 12 carcinoma tissue IHC tests)

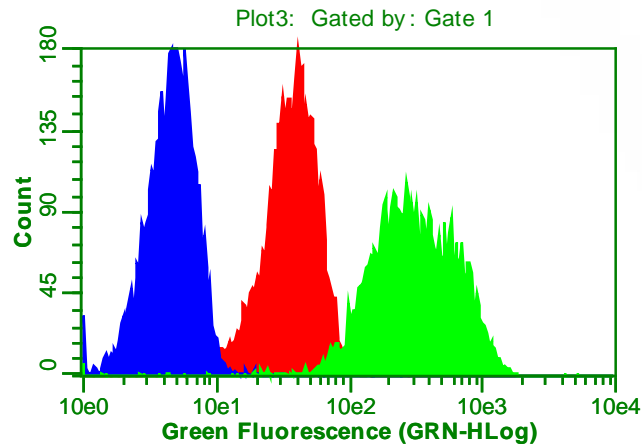
# IF and Flow validation of mAbs



IF data with A549 cells  
(For endogenous protein)



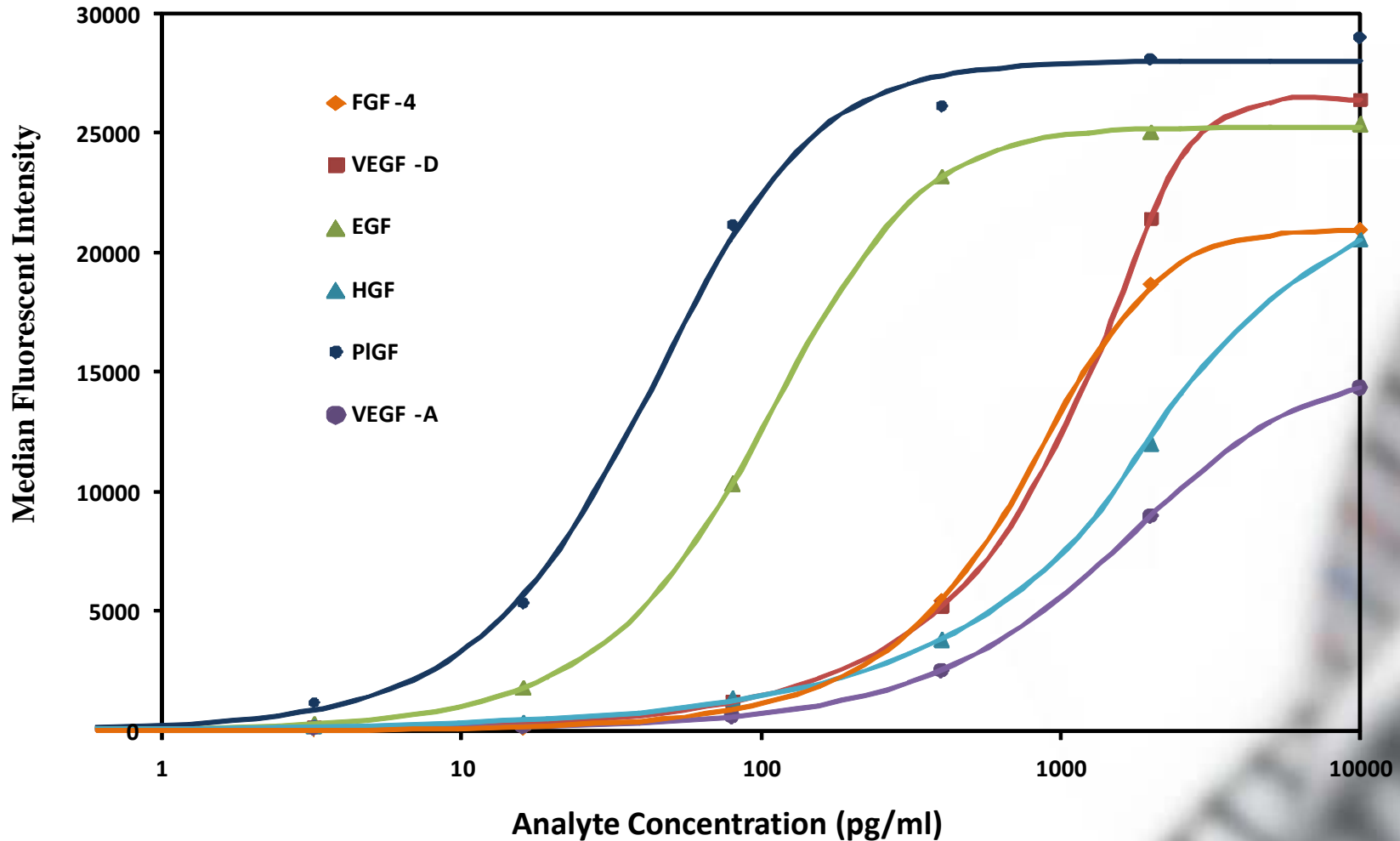
IF data with COS7 cells transiently transfected by RC clone



Flow data analysis for transfected COS7 cells  
(Hybridism supernatant analysis)

# Immunoassay Development

## Quantitation of 6 Growth Factors in an 11-plex ELISA



# Summary

- OriGene offers the most comprehensive proteins for functional studies and compound screening
  - 11,000 over-expression lysates
  - 5,000 purified human proteins
- Proteome wide assay technologies are coming of age. High density arrays and MRM-MS hold great promise in biomarker discovery and validation

[www.origene.com](http://www.origene.com)

Walter Tian: wtian@origene.com