

PRODUCT INSERT

Mouse IgG2b Fluorescein Isothiocyanate (FITC) Conjugated Monoclonal Antibody

REF

Catalogue # G2BF50X (10 µl/test), G2BF50

IVD

For In Vitro Diagnostic Use Only



INTENDED USE

A control to approximate the amount of nonspecific binding of FITC conjugated mouse IgG2b monoclonal antibodies to human lymphocytes in a whole blood procedure with analysis by flow cytometry.

DESCRIPTION

Specificity: No reactivity with human lymphocytes.

Clone: MPC-11, a mouse myeloma cell line (ATCC CCL167)

Ig Chain Composition: Mouse IgG2b

PRODUCT INFORMATION

Cat. # G2BF50X

Antibody Concentration: 0.1 mg/ml

Total Volume: 500 µl

F:P Ratio: 6.0

For HLA-B27 FITC conjugated monoclonal antibody (Catalogue # B27F50X) use 1 µg (10 µl) of control antibody in 100 µl of whole blood. A representative geometric histogram of an HLA-B27 positive sample is shown below:

Cat # G2BF50

Antibody Concentration: 0.5 mg/ml

Total Volume: 100 µl

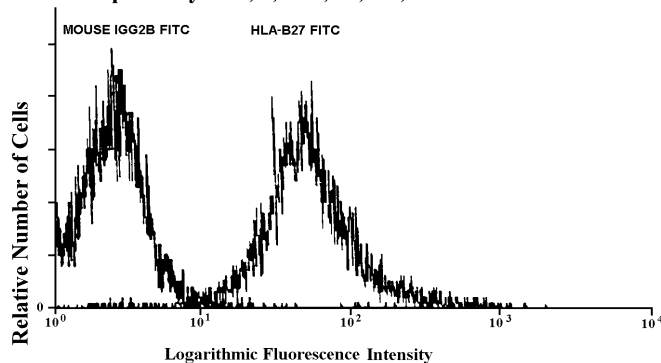
F:P Ratio: 6.0

For HLA-B27 FITC conjugated monoclonal antibody (Catalogue # B27F50) use 1 µg (2 µl) of control antibody in 100 µl of whole blood. A representative geometric histogram of an HLA-B27 positive sample is shown below:

Storage and Stability: The reagent is stable for the period shown on the bottle label when stored in the dark at 2-5°C.

Recommended amount for flow cytometry analysis: Follow the staining procedure and recommended amount of FITC conjugated monoclonal antibody in Product Insert of each test antibody.

Specificity: A1, 3; B27, 37; C2, 6



Do not use the reagent if precipitate is observed.



Caution: All blood products should be treated as potentially infectious. Source material from which this product was derived was found negative when tested in accordance with current FDA required tests. No known test methods can offer assurance that products derived from human blood will not transmit infectious agents.¹



REFERENCE

¹ NCCLS Tentative Standard. "Leukocyte Differential Counting," Publication Number H20-T, NCCLS Vol. 4, No. 11 (1984).



21001 Kittridge Street, Canoga Park, CA 91303-2801 Tel: (818) 702-0042 Fax: (818) 702-6904 WEB: www.onelambda.com

PRODUCT INSERT

EC REP EUROPEAN AUTHORIZED REPRESENTATIVE

MDSS GmbH, Burckhardstrasse 1, D-30163, Hannover, Germany

